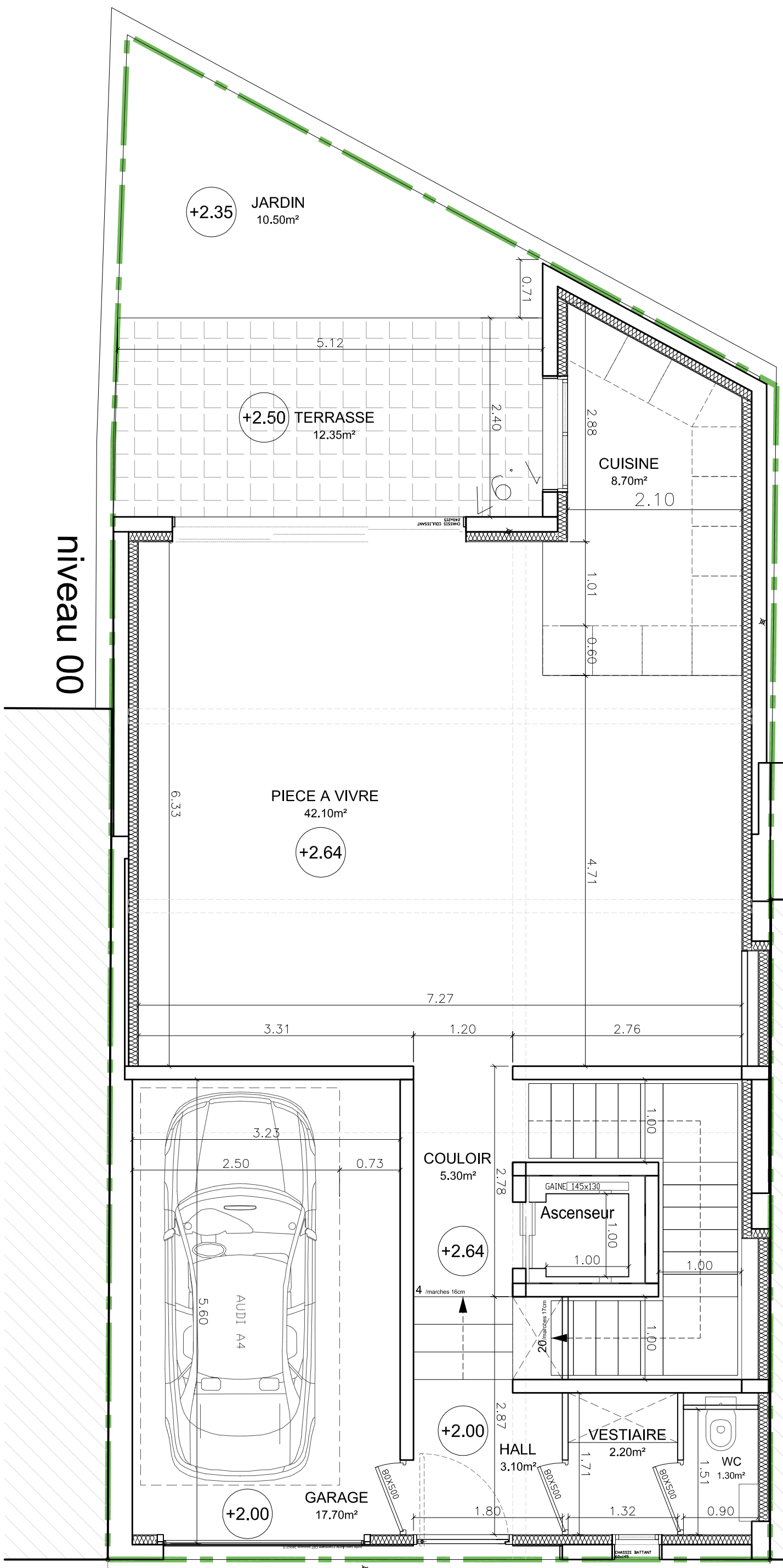
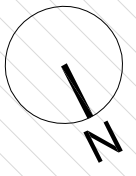


Surface de Plancher = 170.00m²
 Surface Habitable Totale = 160.80m²
 Surface Habitable RDC = 62.70m²
 Surface Garage = 17.70m²



niveau 00



PCMI

Maison Ilette
 4, avenue de l'Ilette
 06600 ANTIBES

Maitre d'ouvrage : **SARL LMOK & PARTNERS**

Gilles Mokni
 22, Boulevard Maréchal Lederc - 06600 ANTIBES
 T. 04 93 67 36 31 / F. 04 93 34 30 96
harena
 Fabrice Carbone
 Kerazur - 1911, chemin Notre Dame - 06220 GOLFE-JUAN
 T. 06 75 05 13 47 / fabrice.carbone@gmail.com

PLAN DU NIVEAU 00
 échelle 1/50

29/02/2016